

Central Research Laboratory

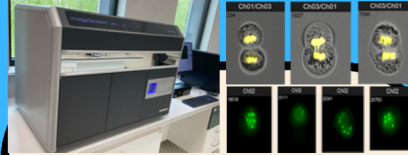
Flow Cytometry



Guava Muse oraz EasyCyte 12HT



Capillary flow cytometers, dedicated to working with low-concentration samples. The maximum 3-laser configuration offers a broad fluorescence excitation spectrum. A 96-well plate reader is available.



ImageStream MKII



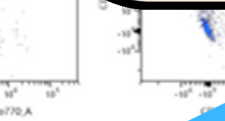
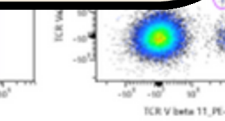
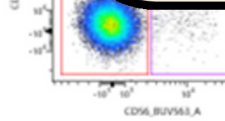
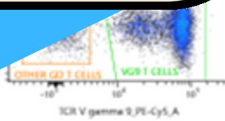
Imaging flow cytometer, combining the advantages of traditional flow cytometry – high throughput – with spatial fluorescence distribution. Ideal for studies of cell synapses, fluorescent probe relocalization, and extracellular vesicle (EV) analysis.



Attune CytPix



Acoustic flow cytometer – the fastest instrument on the market, capable of analyzing up to 1 mL of sample per minute. In addition to conventional fluorescence staining, it captures Bright Field images of the analyzed cells. Allows No Lyse No Wash protocol.

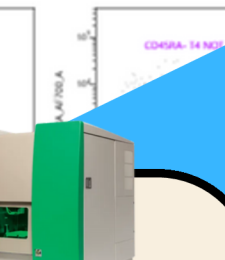
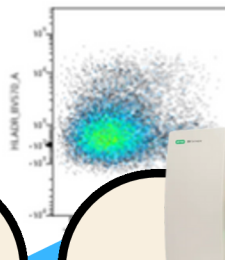
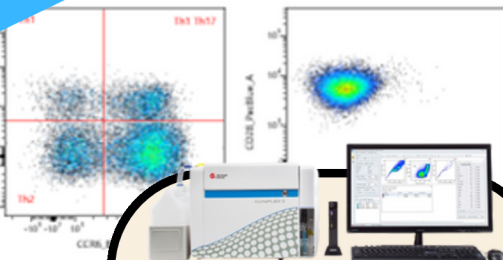


WLSM ■ CD38+ MEMORY TRIG

WLSM ■ CD38+ MEMORY TRIG

WLSM ■ T4 NOT TRIG

WLSM ■ CD38+ T4 NOT



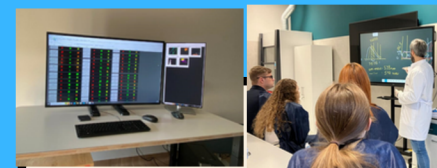
Cytoflex 3L

The CytoFLEX instrument enables the analysis of samples stained with up to 13 fluorochromes. It is well-suited for basic applications such as cell cycle, apoptosis, and viability studies, as well as for simple immunological panels.



BioRad ZE5 i S3

Analyzer (ZE5) and cell sorter (S3). The ZE5 is suitable for similar applications as the CytoFLEX, with the added advantage of a 561 nm laser. The S3 sorter allows for the isolation of populations with simple phenotypes or cells transfected with a marker such as GFP.



Data analysis, training sessions, and panel design – all tailored to support your research needs.

Our experienced team is here to support you at every stage of your research – from experimental design, through sample acquisition, to data analysis. We look forward to collaborating with you.

